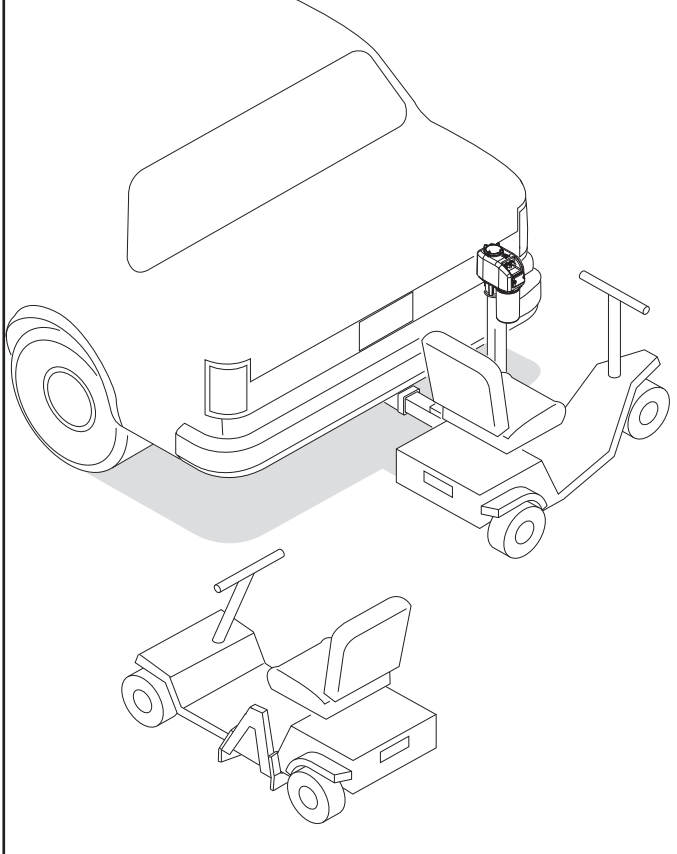


INSTALLATION MANUAL TRILIFT:

INSTALLATION AND OPERATION INSTRUCTIONS - SERVICE AND PARTS INFORMATION



IMPORTANT

A receiver hitch must be installed by a reputable hitch installer. Hitch must be level side to side and fore to aft. Distance from top of receiver to to ground should be no less than 12" and no more than 22"

Vehicle must be in good repair. Worn or damaged vehicle parts must be repaired or replaced before the hitch is installed.

CONTENTS OF CARTON:

PART#	QTY.	DESCRIPTION
T1101	1	ACTUATOR 24"
L	1	"L" ADAPTOR OR
TA	1	TLT "L" ADAPTOR
PH	1	POWERHEAD
SB	1	SCOOTERS DOCKING DEVICE OR
PWC	1	POWER WHEELCHAIR DOCKING DEVICE
SHP	1	SILENT HITC PIN

TOOLS NEEDED:

1. HEX BIT 5/32", 3/8",
2. SCREW DRIVERS (PHILLIPS AND FLAT HEAD)
3. 7/16", 1/4", 3/8", 1/2", 5/8", AND 3/4" SOCKETS OR WRENCHES

INSTALLATION MANUAL TRILIFT:

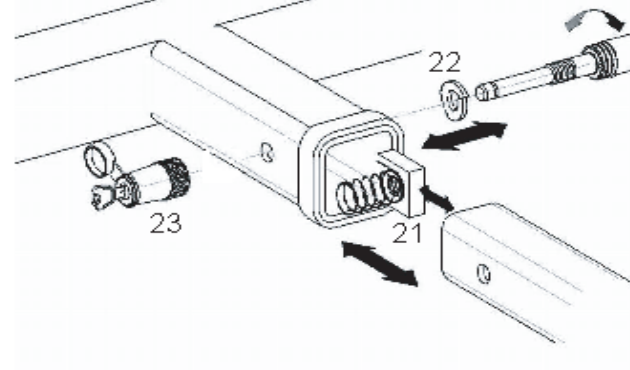
Warning

If maximum weight is exceeded, the design modified, or the unit is installed in a way contrary to manufacturer's instructions the warranty is void and catastrophic failure may occur. This could result in serious injury or death.

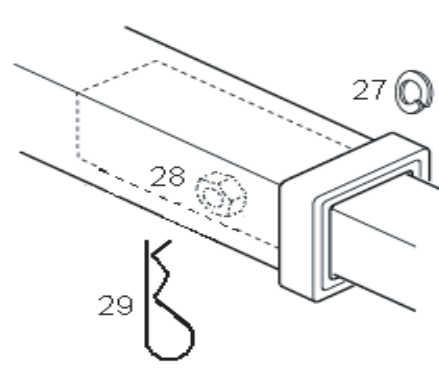
INSTALLATION INSTRUCTIONS:

1. FASTEN LIFT ASSEMBLY TO CLASS III RECEIVER HITCH (CUSTOMER SUPPLIED) SLIDE "L" ADAPTOR INTO HITCH. FASTEN ASSEMBLY TO HITCH WITH BOLT (20), LOCKWASHER (22), AND HEX NUT (21), TIGHTEN ALL FASTENERS. INSTALL COTTER PIN OR LOCK (23) - DO NOT OVERTIGHTEN

MAXIMUM WEIGHT: 500 LBS.



- 1B. FASTEN LIFT ASSEMBLY TO CLASS II RECEIVER HITCH (CUSTOMER SUPPLIED) SLIDE "L" ADAPTOR INTO HITCH. FASTEN ASSEMBLY TO HITCH WITH BOLT (26), LOCKWASHER (27), AND HEX NUT (28), TIGHTEN ALL FASTENERS. INSTALL COTTER PIN OR LOCK (29) - DO NOT OVERTIGHTEN



MAXIMUM WEIGHT: 140 LBS.

Warning

READ AND UNDERSTAND INSTALLATION INSTRUCTIONS VEHICLE MUST BE IN SAFE PARKED CONDITION

IGNITION SWITCH MUST BE IN "LOCK" POSITION REMOVE JEWELRY (WATCHES, RINGS, ETC.)



TRILIFT
13020 SAN FERNANDO RD # A
SYLMAR CA 91342
1-800-300-4192 (U.S.)

PAGE:	DATE:	FORM #:
1 OF 11	1 FEB 08	20803
REVISION:	ECN:	APPROVED:
E	13644	



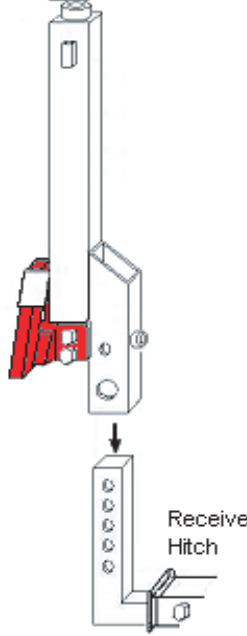
TRILIFT
13020 SAN FERNANDO RD # A
SYLMAR CA 91342
1-800-300-4192 (U.S.)

PAGE:	DATE:	FORM #:
2 OF 11	1 FEB 08	20803
REVISION:	ECN:	APPROVED:
E	13036	

INSTALLATION MANUAL TRILIFT:

3. FASTEN ACTUATOR TO "L" ADAPTOR

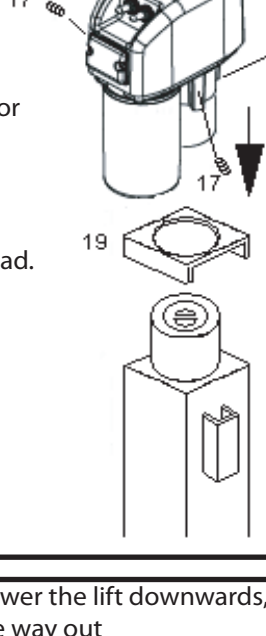
2. Slide actuator onto "L" adaptor do not install the any bolts.



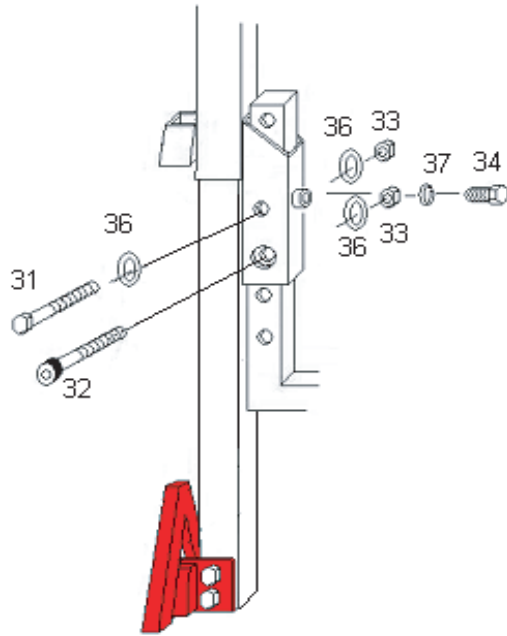
3. Slide powerhead onto actuator and tighten bolts (17)

DO NOT OVERTIGHTEN.

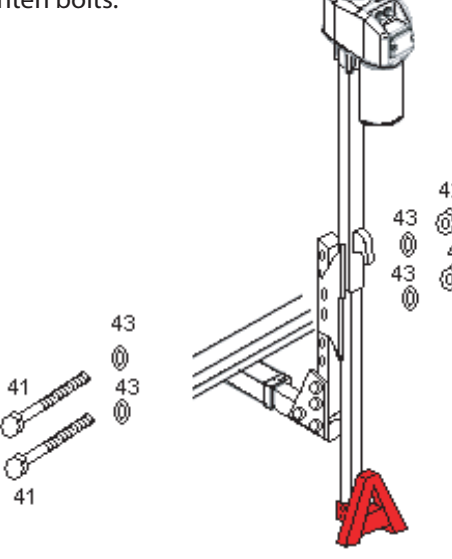
Connect power to powerhead.



4. TRILIFT Turn power on and lower the lift downwards, so that the lift extends all the way out (for maximum ground clearance) install bolt (31) and locknut (33) the bolt (32) round head goes through the larger opening (no washer) install bolt (34) with (37) nut. This bolt is to adjust the angle of the lift is not mast to be tit.



- 4B TRILIFT ULTRA LITE Turn power on and lower the lift downwards, so that the lift extends all the way out (for maximum ground clearance) intall and tighten bolts.



TRILIFT
13020 SAN FERNANDO RD # A
SYLMAR CA 91342
1-800-300-4192 (U.S.)

PAGE:	DATE:	FORM #:
3 OF 11	1 FEB 08	20803
REVISION:	ECN:	APPROVED:
E	13036	

INSTALLATION MANUAL TRILIFT:

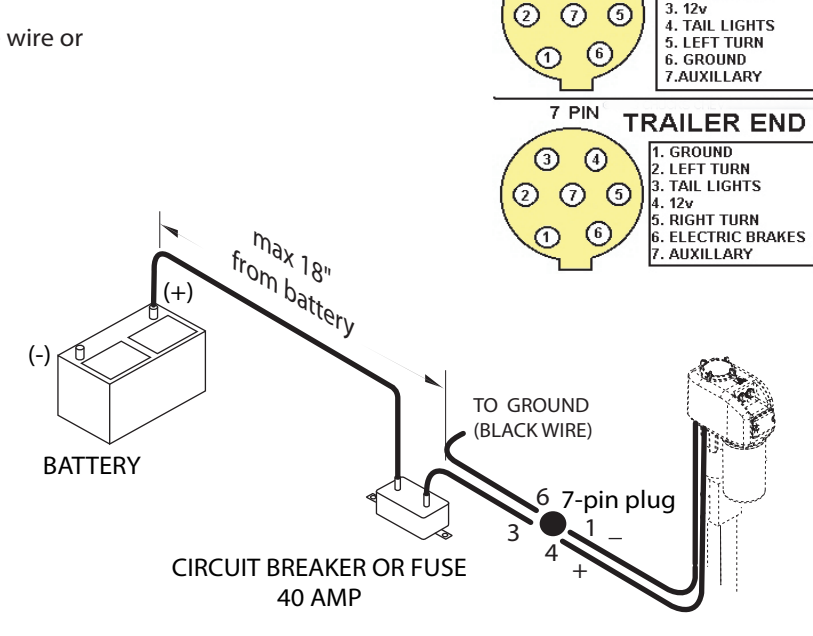
POWERHEAD WIRING:

Use crimp or solder connections
Connect battery's positive terminal to circuit breaker (40 amp) with 10 gage wire or larger.
Connect circuit breaker to powerhead with 10 gage wire or larger and butt splice.

when using oem wiring make sure a 40 amps fuse is installed in the fusebox

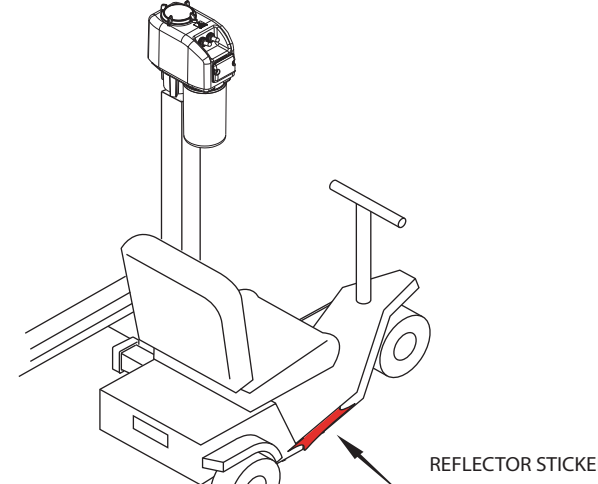
Warning

Do not change wiring order in the 7-pin plugs



5. INSTALL SCOOTER BRACKET:

(seperate instruction)



6. INSTALL REFLECTOR STICKER Reflector should be installd on the right side of the scooter so it is visible from the rear while scooter is loaded on the lift.



TRILIFT
13020 SAN FERNANDO RD # A
SYLMAR CA 91342
1-800-300-4192 (U.S.)

PAGE:	DATE:	FORM #:
3 OF 11	1 FEB 08	20803
REVISION:	ECN:	APPROVED:
E	13036	



TRILIFT
13020 SAN FERNANDO RD # A
SYLMAR CA 91342
1-800-300-4192 (U.S.)

PAGE:	DATE:	FORM #:
4 OF 11	1 FEB 08	20803
REVISION:	ECN:	APPROVED:
H	13644	

INSTALLATION MANUAL TRILIFT:

OPERATING INSTRUCTIONS:

The added length and weight of the Trilift, and a scooter or wheel chair, will effect how your vehicle handles. It will be more sensitive on slippery roads or in a cross wind.

Adjust your driving style to match conditions. Drive slowly until you become familiar with how the vehicle handles when turning and backing up. Plan for turns, stops, and lane changes well in advance. Avoid slippery conditions, (i.e.-ice, snow, and loose gravel). Reduce speed on rough surfaces or going up and down slopes, (i.e.- driveways). Remember added overall length when backing up, parking, etc.

Operators must become familiar with all controls and procedures. Understand what the Trilift can do and its limits. Practice using it safely.

These safety labels are on the Trilift. Know where they are; read, understand, and obey them.

WARNING

Avoid serious injury or death to yourself and others. Follow these instructions:

- Read and understand OPERATOR'S INSTRUCTIONS before using TRILIFT.
- Transporting vehicle must be safely parked, on a flat level surface, when loading and unloading scooter.
- Keep body, hands, and feet away from shearing / squeezing points.
- When transporting, scooter must be secured to lift lading system.

- When scooter is not on lift, Triangle must be secured all the way up in the hold bracket.
- NO RIDERS on lift.
- Do not overload lift. Maximum capacity 400 lbs.

INSPECTION:

Before using the Trilift, the user must inspect it completely to insure safe operation:

- Actuator, triangle, and docking device on the scooter. Look at their condition, check for: cracked or broken parts, loose or missing fasteners
- Rocker Switch- Must work freely and return to neutral when released.
- Tires (transport Vehicle)- Tires must be in good condition. Check tire pressure, Tires must be inflated to recommended pressure.
- Safety Labels-If safety labels are missing or unreadable, replace them immediately.
- If the unit is unsafe or in need of repair, do not use it until it is returned to a safe operating condition.

!!!IMPORTANT NOTICE!!!

DO NOT install the Trilift on the rear of "towed" vehicles. This includes travel trailers, 5th Wheels, etc. The excessive shock loading that occurs in this location is not compatible with the trilift design. The trilift warranty is void when a unit is installed in this manner

WARNING

Don't risk serious injury or death in a shearing or squeezing accident. Keep body, hands, and feet away.



WARNING

MAXIMUM WEIGHT: 400 LBS

If maximum weight is exceeded, the design modified, or the unit is installed in a way contrary to manufacturer's instructions the warranty is void and catastrophic failure may occur. This could result in serious injury or death.



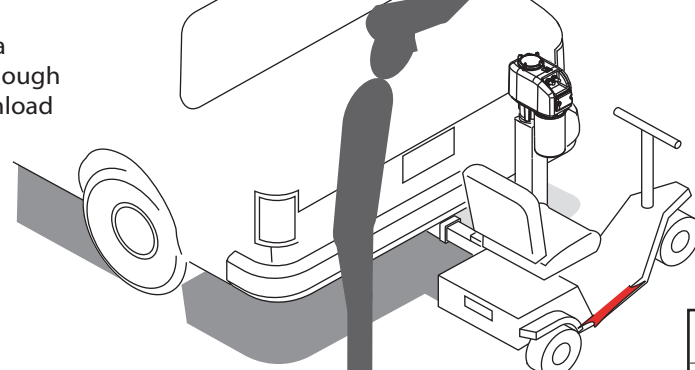
TRILIFT
13020 SAN FERNANDO RD # A
SYLMAR CA 91342
1-800-300-4192 (U.S.)

PAGE:	DATE:	FORM #:
5 OF 11	1 FEB 08	20803
REVISION:	ECN:	APPROVED:
H	13036	

INSTALLATION MANUAL TRILIFT:

OPERATING POSITION:

VEHICLE must be in a safely parked position on a flat level surface. Allow enough room to safely load and unload scooter or wheel chair.



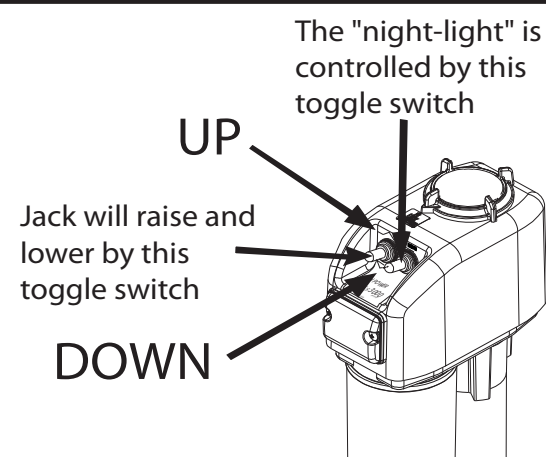
OPERATOR must keep themself and others away from moving parts.



OPERATION (ELECTRICAL)

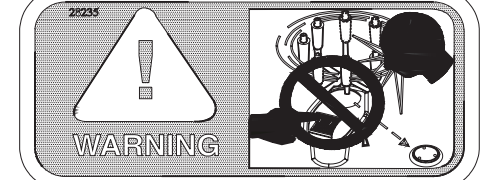
When the powerhead reaches the end of it's travel (either raising or lowering), a built in torque limiter goes into operation with a clicking noise.

This torque limiter permits the final drive gear to slip; and thus, protects the unit. PROLONGED OPERATION OF THE TORQUE LIMITER IS NOT RECOMMENDED.

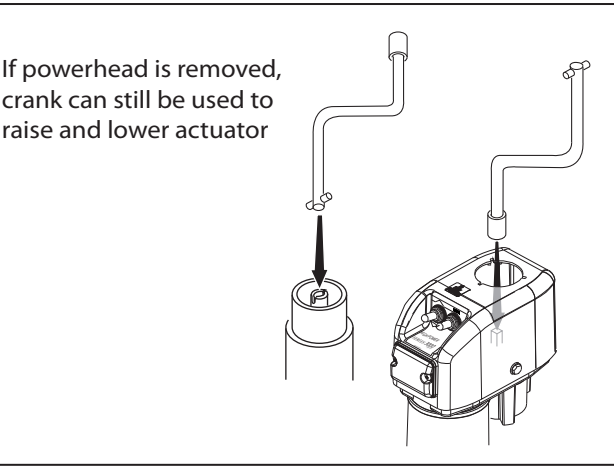


OPERATION (MANUAL)

If an electrical failure should occur, the emergency handle may be inserted into the actuator post and the actuator can be raised and lowered.



WHEN CRANK HANDLE IS BEING USED, DO NOT PUSH ROCKER SWITCH

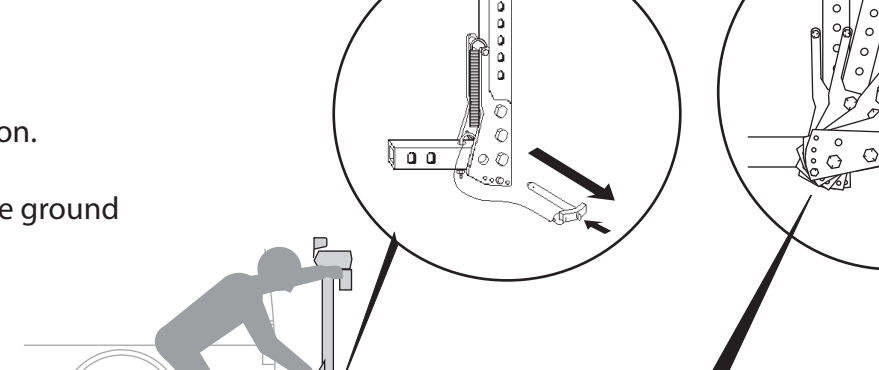


FOLD UNIT DOWN for access to rear of vehicle, trucks, van cargo doors, etc.

IMPORTANT: Scooter or chair must be removed form lift.

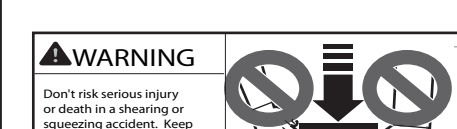
TO FOLD DOWN

- Hold unit up.
- Push on the quick relese Button.
- Remove quick relese pin.
- Pivot unit down, level with the ground



adjust the position of the tilt by movig the bolt.

DO NOT DROP UNIT



TO FOLD UP

- Pivot unit all the way up and hold
- Push on the quick relese Button.
- Put quick relese pin.



MAINTENANCE



Pivot points should be greased, as needed, with lithium based grease.

MAINTENANCE

Once a year, the powerhead should be removed and a liberal amount of grease (preferably a grease with high melting point) applied directly to the coupling on which the drive pin rests. DO NOT POUR OIL into top of the jack post.

Once a year, the housing cover should be removed and the gears inspected for proper lubrication. Remove 4 screws and tap around edge of housing to free cover. DO NOT insert screw driver blade! (This may damage mating surfaces.) Before replacing cover, clean mating surfaces. If lubrication is needed, use Lubriplate GR-132 grease or equivalent.



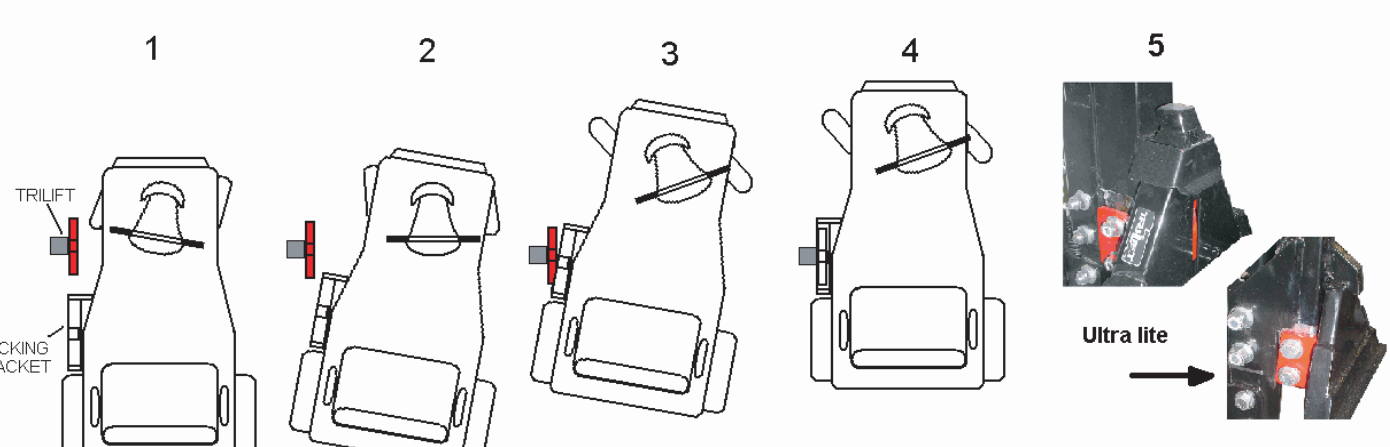
TRILIFT
13020 SAN FERNANDO RD # A
SYLMAR CA 91342
1-800-300-4192 (U.S.)

PAGE:	DATE:	FORM #:
7 OF 11	1 FEB 08	20803
REVISION:	ECN:	APPROVED:
H	13644	

OPERATING INSTRUCTIONS

For loading a scooter

1. Enter the key to key switch , and turn to ON position.
2. Push switch to down position, so the lift extend all the way down to the ground or to the end.
3. Drive the scooter so the docking bracket will be at the same line, and 3" from the lift male triangle pic - 1
4. Turn the scooter stirring slightly to the right. pic-1 drive forward and turn scooter stirring back to the left pic-2 and pic-3 so the bracket will be above the red triangle pic-4.
5. Push switch to up position so lift grab the scooter bracket all the way up
- IMPORTANT: 6. Check if the docking bracket locks in Position pic -5
7. Switch the key off and remove it.



For unloading a scooter

1. Enter the key to key switch and turn to ON position.
2. Push switch to down position, so the lift extend all the way down to the ground or to the end.
3. Drive the scooter forward, turn the wheels all the way to the left and drive the scooter backward and away.
4. Push switch to up position to lock lift all the way up.
5. Switch the key off and remove it.

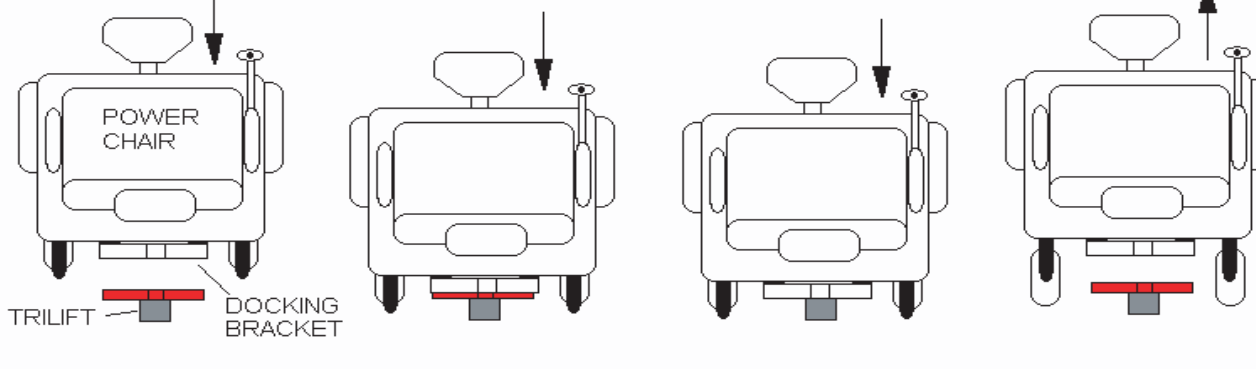


TRILIFT
13020 SAN FERNANDO RD # A
SYLMAR CA 91342
1-800-300-4192 (U.S.)

PAGE:	DATE:	FORM #:
8 OF 11	1 FEB 08	20803
REVISION:	ECN:	APPROVED:
H	13644	

For loading wheelchairs

1. Enter the key to key switch and turn to ON position.
2. Push switch to down position all the way down to the ground or to the end.
3. Drive the wheelchair backward so the docking bracket will be above the lift male triangle-
4. Push switch to up position so lift grab the power wheel chair bracket all the way up
- IMPORTANT: 5. Check that the docking bracket is locked in position pic -5
- 7 switch the key off and remove it.



For unloading wheelchairs

1. Enter the key to key switch and turn on position.
2. Push switch to down position all the way down to the ground or to the end.
3. Drive the wheelchairs forward a way from the lif4. Push switch to up position all the way.
4. Push switch to up position to lock lift all the way up.
5. Switch the key off and remove it.



TRILIFT
13020 SAN FERNANDO RD # A
SYLMAR CA 91342
1-800-300-4192 (U.S.)

PAGE:	DATE:	FORM #:
9 OF 11	1 FEB 08	20803
REVISION:	ECN:	APPROVED:
H	13644	



TRILIFT
13020 SAN FERNANDO RD # A
SYLMAR CA 91342
1-800-300-4192 (U.S.)

PAGE:	DATE:	FORM #:
10 OF 11	1 FEB 08	20803
REVISION:	ECN:	APPROVED:
H	13644	

ACCESSORIES:



Licenses plate Holder with light.



Power head cover



Hitch pin lock



Remote Control



TRILIFT
13020 SAN FERNANDO RD # A
SYLMAR CA 91342
1-800-300-4192 (U.S.)

PAGE:	DATE:	FORM #:
11 OF 11	1 FEB 08	20803
REVISION:	ECN:	APPROVED:
H	13644	